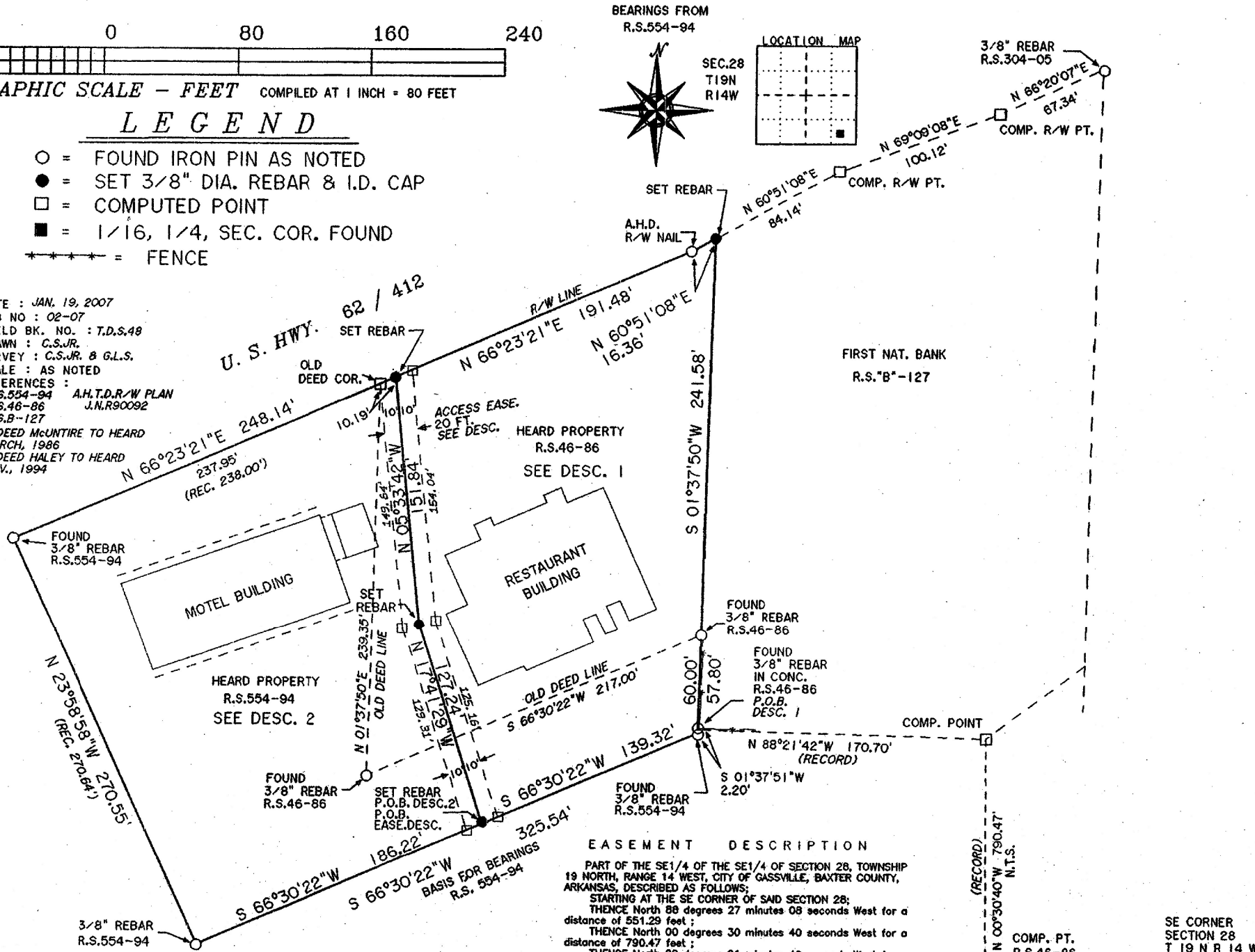


GRAPHIC SCALE - FEET COMPILED AT 1 INCH = 80 FEET

**LEGEND**

- = FOUND IRON PIN AS NOTED
- = SET 3/8" DIA. REBAR & I.D. CAP
- = COMPUTED POINT
- = 1/16, 1/4, SEC. COR. FOUND
- \*\*\*\*\* = FENCE

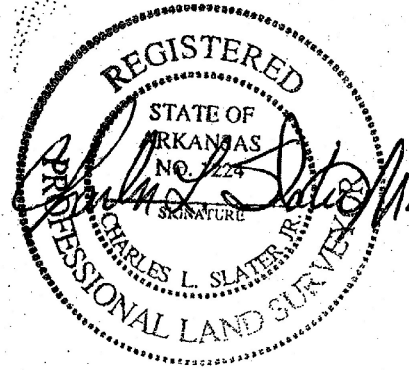
DATE : JAN. 19, 2007  
 JOB NO : 02-07  
 FIELD BK. NO. : T.D.S.48  
 DRAWN : C.S.JR.  
 SURVEY : C.S.JR. & G.L.S.  
 SCALE : AS NOTED  
 REFERENCES :  
 R.S.554-94 A.H.T.D.R/W PLAN  
 R.S.46-86 J.N.R90092  
 R.S.B-127  
 W.DEED McINTIRE TO HEARD  
 MARCH, 1986  
 W.DEED HALEY TO HEARD  
 NOV., 1994



**EASEMENT DESCRIPTION**  
 PART OF THE SE1/4 OF THE SE1/4 OF SECTION 28, TOWNSHIP 19 NORTH, RANGE 14 WEST, CITY OF GASSVILLE, BAXTER COUNTY, ARKANSAS, DESCRIBED AS FOLLOWS:  
 STARTING AT THE SE CORNER OF SAID SECTION 28;  
 THENCE North 88 degrees 27 minutes 08 seconds West for a distance of 551.29 feet;  
 THENCE North 00 degrees 30 minutes 40 seconds West for a distance of 790.47 feet;  
 THENCE North 88 degrees 21 minutes 42 seconds West for a distance of 170.70 feet;  
 THENCE South 01 degrees 37 minutes 51 seconds West for a distance of 2.20 feet;  
 THENCE South 66 degrees 30 minutes 22 seconds West for a distance of 139.32 feet TO A 3/8" REBAR AND THE POINT OF BEGINNING FOR THE EASEMENT HEREIN DESCRIBED,  
 THENCE South 66 degrees 30 minutes 22 seconds West for a distance of 10.05 feet;  
 THENCE North 17 degrees 41 minutes 29 seconds West for a distance of 129.31 feet;  
 THENCE North 05 degrees 33 minutes 42 seconds West for a distance of 149.64 feet TO POINT ON THE SOUTHERLY R/W LINE OF U.S. HWY. 62/412;  
 THENCE North 66 degrees 23 minutes 21 seconds East for a distance of 21.04 feet ALONG SAID R/W LINE TO A POINT;  
 THENCE LEAVING R/W LINE RUN;  
 THENCE South 05 degrees 33 minutes 42 seconds East for a distance of 154.04 feet;  
 THENCE South 17 degrees 41 minutes 29 seconds East for a distance of 125.16 feet TO POINT;  
 THENCE South 66 degrees 30 minutes 22 seconds West for a distance of 10.05 feet TO THE POINT OF BEGINNING,  
 Together with and subject to covenants, easements, and restrictions of record.  
 Said property contains 0.13 acres more or less.

**DESCRIPTION 1**  
 PART OF THE SE1/4 OF THE SE1/4 OF SECTION 28, TOWNSHIP 19 NORTH, RANGE 14 WEST, CITY OF GASSVILLE, BAXTER COUNTY, ARKANSAS, DESCRIBED AS FOLLOWS:  
 STARTING AT THE SE CORNER OF SAID SECTION 28;  
 THENCE North 88 degrees 27 minutes 08 seconds West for a distance of 551.29 feet;  
 THENCE North 00 degrees 30 minutes 40 seconds West for a distance of 790.47 feet;  
 THENCE North 88 degrees 21 minutes 42 seconds West for a distance of 170.70 feet TO THE POINT OF BEGINNING FOR TRACT HEREIN DESCRIBED;  
 THENCE South 01 degrees 37 minutes 51 seconds West for a distance of 2.20 feet TO A 3/8" REBAR;  
 THENCE South 66 degrees 30 minutes 22 seconds West for a distance of 139.32 feet TO A 3/8" REBAR;  
 THENCE North 17 degrees 41 minutes 29 seconds West for a distance of 127.24 feet TO A 3/8" REBAR;  
 THENCE North 05 degrees 33 minutes 42 seconds West for a distance of 151.84 feet TO A 3/8" REBAR ON THE SOUTHERLY R/W LINE OF U.S. HWY. 62/412;  
 THENCE North 66 degrees 23 minutes 21 seconds East for a distance of 191.48 feet ALONG SAID R/W LINE TO A POINT;  
 THENCE North 60 degrees 51 minutes 08 seconds East for a distance of 16.36 feet ALONG SAID R/W LINE TO A 3/8" REBAR; THENCE LEAVING R/W LINE;  
 THENCE South 01 degrees 37 minutes 50 seconds West for a distance of 241.58 feet TO A 3/8" REBAR;  
 THENCE South 01 degrees 37 minutes 51 seconds West for a distance of 57.80 feet TO THE POINT OF BEGINNING,  
 Together with and subject to covenants, easements, and restrictions of record.  
 Said property contains 1.12 acres more or less.

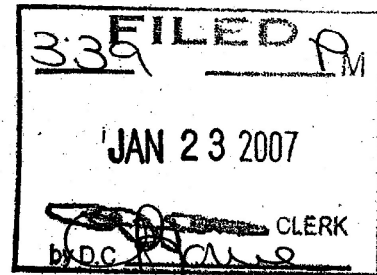
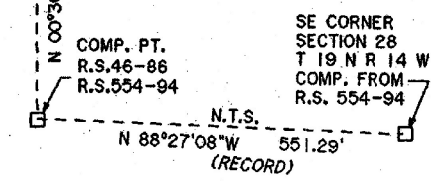
**DESCRIPTION 2**  
 PART OF THE SE1/4 OF THE SE1/4 OF SECTION 28, TOWNSHIP 19 NORTH, RANGE 14 WEST, CITY OF GASSVILLE, BAXTER COUNTY, ARKANSAS, DESCRIBED AS FOLLOWS:  
 STARTING AT THE SE CORNER OF SAID SECTION 28;  
 THENCE North 88 degrees 27 minutes 08 seconds West for a distance of 551.29 feet;  
 THENCE North 00 degrees 30 minutes 40 seconds West for a distance of 790.47 feet;  
 THENCE North 88 degrees 21 minutes 42 seconds West for a distance of 170.70 feet TO A 3/8" REBAR;  
 THENCE South 01 degrees 37 minutes 51 seconds West for a distance of 2.20 feet TO A 3/8" REBAR;  
 THENCE South 66 degrees 30 minutes 22 seconds West for a distance of 139.32 feet TO A 3/8" REBAR AND THE POINT OF BEGINNING;  
 THENCE South 66 degrees 30 minutes 22 seconds West for a distance of 188.22 feet TO A 3/8" REBAR;  
 THENCE North 23 degrees 58 minutes 58 seconds West for a distance of 270.55 feet TO A 3/8" REBAR ON THE SOUTHERLY R/W LINE OF U.S. HWY. 62/412;  
 THENCE North 66 degrees 23 minutes 21 seconds East for a distance of 248.14 feet ALONG SAID R/W LINE TO A 3/8" REBAR; THENCE LEAVING R/W RUN;  
 THENCE South 05 degrees 33 minutes 42 seconds East for a distance of 151.84 feet TO A 3/8" REBAR;  
 THENCE South 17 degrees 41 minutes 29 seconds East for a distance of 127.24 feet TO THE POINT OF BEGINNING,  
 Together with and subject to covenants, easements, and restrictions of record.  
 Said property contains 1.30 acres more or less.



15747

**SURVEY AND DESCRIPTIONS PREPARED FOR:**  
**JOHN W. HEARD**  
 AND  
**MARGIE J. HEARD**

JAN. 19, 2007



**FILING RECORD**  
 BAXTER COUNTY, ARKANSAS  
 RURAL SURVEY INST. NO. 13 -07  
 STATE SURVEYORS CODE  
 500-19N-14 W-0-28-220-03-1224  
 Slater Surveying & Mapping  
 POST OFFICE BOX 70  
 GASSVILLE, ARKANSAS 72636  
 (870) 495 - 6005